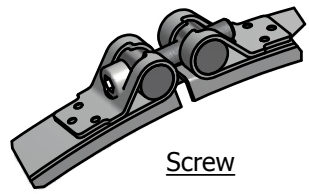
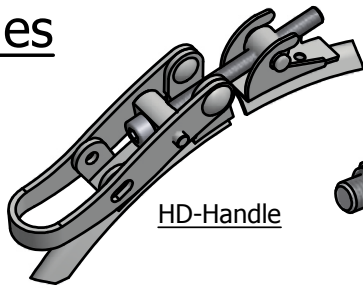


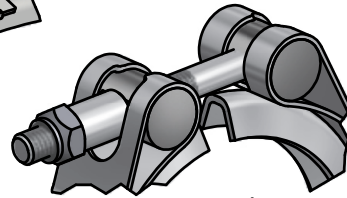
1: Closure Styles



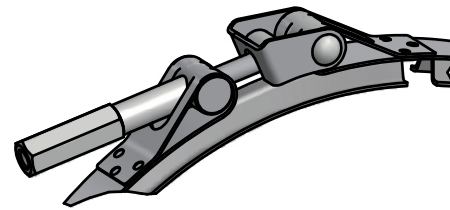
Screw



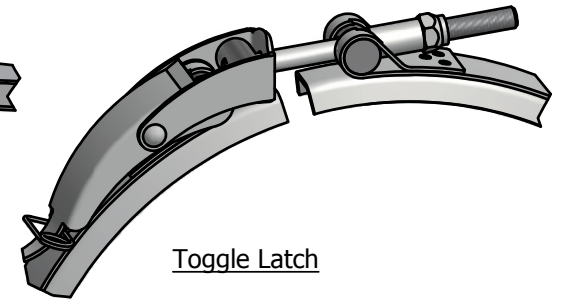
HD-Handle



T-Bolt



T-Bolt with Toggle



Toggle Latch

2: Materials

W1: Mild Steel, Cr3 Galvanised
1.0330

W4: SST, Aisi 304
1.4301

W5: SST, Aisi 316
1.4404

Ti: Titanium, Grade 2

3: Arrangements



Flat Band



2-Segment



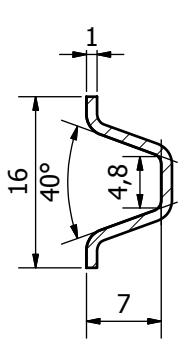
3-Segment



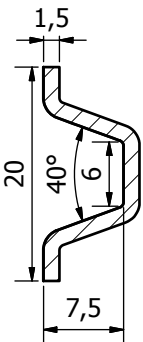
4-Segment

4: Profile, Diameter (50 - 600 mm)

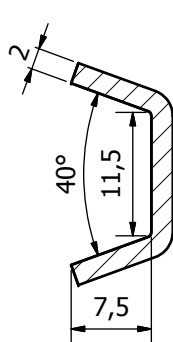
Chart shows a variety of common profiles.



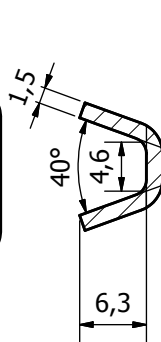
C302



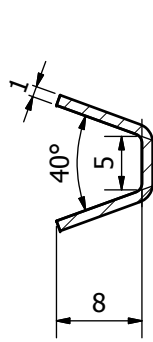
C332



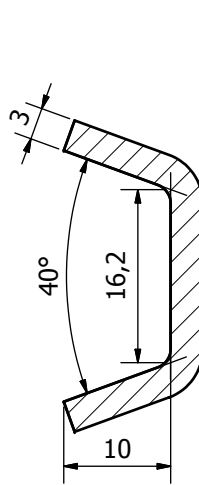
C396



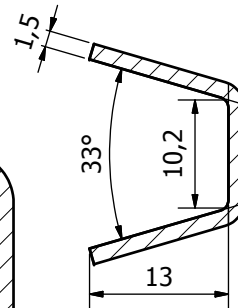
C393



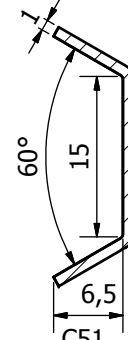
C24



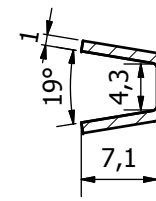
C63



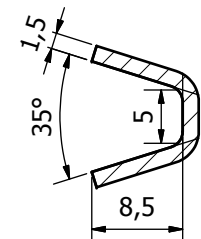
C53



C51



C134



C31

Material			Surface treatment			
Designed by	Checked by	Approved by	Date	Tolerances	Date	Weight
jh				ISO 2768m	15/11/12	
			Selection criteria for V-Clamps			
			D-0410		Edition	Sheet
					1 / 1	